

Disrupting Agriculture in India



Social Entrepreneurship

The utopic middle path



58% of workforce \neq 13.9% of GDP
The fallacy of legacy systems





We have a lush nature gifted biodiversity
How do we sustainably use it?



Central Asia
World's largest natural cannabis reserve





Low THC
Cannabis sativa L.
(Industrial & Medicinal)



VS
High THC
Cannabis indica
(Recreational & Medicinal)

The Oldest Cultivated Crop

MASON CITY GLOBE-GAZETTE

Hemp Mill to Start in November

CROP AT BRITT BEST IN AREAS UNDER BUTCHER

Abandonment May Run as High as 15 to 18 Per Cent, He States

The Mason City hemp mill is expected to start operations some time in November, according to F. W. Butcher, Chicago, president of War Hemp Industries, Inc. Deliveries of machinery for the plants are running as much as 12 weeks behind schedule, he reported during a brief visit here Wednesday evening.

The plants at Algona and Britt, on which construction was begun ahead of the Mason City project, also will begin operation ahead of the local plant, he said.

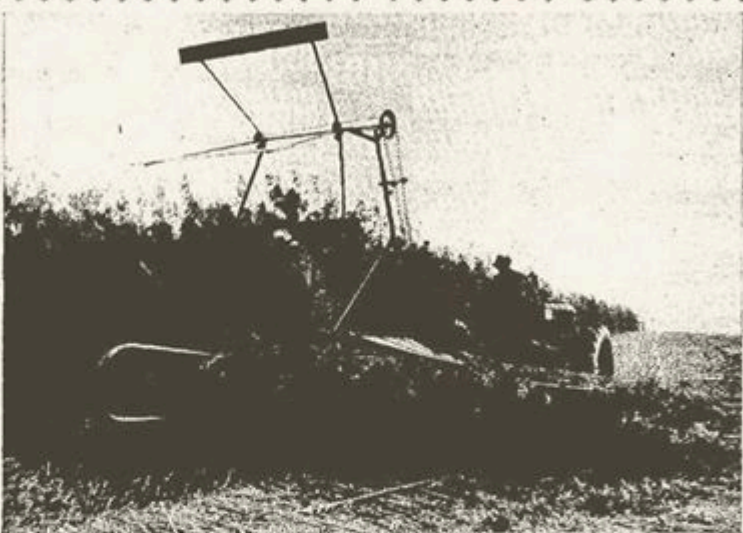
Hemp at Britt is the finest in the 47 acres under the supervision of War Hemp Industries. The president said. Losses because of unfavorable weather have been unusually high, he reported. He called attention to the bollworm in Boone county which ruined 800 acres of hemp there. He also did much damage in Illinois and Indiana, he said.

Abandonment of the hemp may run as high as 15 to 18 per cent for the entire country, Mr. Butcher reported. Unusually low yields in North Iowa and Minnesota was very unfavorable for the crop.

The hemp official reported his statement made during his last visit, that each plant would have a goal of 3,500 acres to be planted in 1944. Operating capacity of the plants has been determined to be above actual expectations.

The late start to be made in operations by the local plant will not affect the hemp process, Mr. Butcher explained, because when the hemp has been retted and baled it will be hauled to the plant site and stacked there.

**G. A. SCHULTZ
SUCCEEDS HERE**



M'PHERREN HAS BOY SCOUT POST

Heads Leadership Training Program

The appointment of L. E. McPherrin of Mason City as chairman of the council committee of leadership training for the Big Scouts of America was announced at the regular quarterly meeting of the council executive board in the school administration building Wednesday evening.

Mr. McPherrin succeeds Warren W. Moads, who is now serving in the navy. As chairman of the council committee, Mr. McPherrin becomes a member of the council executive committee and the council executive board. He is also chairman of the troop committee.

"THAT SHOULD MAKE NO. 1 HEMP"

—With its huge reel turning lazily, the hemp harvester was just rounding a corner in the M. B. Hawke field north of Sheffield when Manager Fred Cahalan of the Mason City hemp plant arrived on the scene. "That should make No. 1 hemp," was his comment as he looked at the 9 foot wall left as the cutter passed. Fairly uniform in height, the stalks varied from the thickness of a pencil to iron that thickness, an ideal size, according to Mr. Cahalan. Orville Hillis is running the tractor while Albert Gerdas is on the harvester. Both are farmers in the neighborhood. (Lock photo)

V. F. W. VOTES BOND PURCHASE

Organization Buys \$2,500 in 3rd Loan

The Veterans of Foreign Wars voted to purchase \$2,500 in war bonds in the first War Loan drive at their semi-monthly business meeting at the hall, 117 Delaware avenue southeast, Wednesday evening, with Commander Al K. Collins in charge.

Having served in '17 and '18, these veterans who have served on foreign soil, know the true meaning of having the home folks back of them, according to Mr. Collins.

Lyle Hartwell Gives 6 Books to Local Historical Society

Old-Time Resident Donates Volumes of Historical Interest

In the interest of the Curran Gerdas County Historical society of

The very first American flag,
handmade by Betsy Ross.

was sewn from **HEMP**, and done so in
PHILADELPHIA, PENNSYLVANIA

GROW
HEMP
FOR THE
WAR

Ford's *'Grown from the soil'* HEMP CAR

One of Henry Ford's first cars ran entirely on **Hemp ethanol**. The body was also constructed from **Hemp plastic**, which was 10x stronger than steel.

Of course - Hemp was then outlawed in the US in 1937 due to the potential damaging effect it would have on many powerful industries at the time, including oil, plastics & paper giants.

Imagine where we would be today had these power hungry tyrants not suppressed the amazing bio-technologies of Hemp?



TIME TO RECONSIDER HEMP? FB.COM/EDUCATIONNOTMEDICATION

Played a pivotal role in our history

Could hemp help nuclear clean-up in Japan?

See also [2011 Japan Earthquake](#) / [Hemp](#) / [Chernobyl](#) / [Japan](#) / [Marijuana](#)



Share On [f](#) [Share On](#) [t](#) [Email](#) [+](#)

March 13, 2011

I've been glued to the television and internet re the unfolding disaster in [Japan](#). First an 8.9 m earthquake strikes near the island nation, then

Industrial Cannabis (Hemp): The Billion Dollar Super Crop



Mercedes-Benz





CONTACT:
 Ryan Fletcher 202-641-0277
ryan@mintwood.com
 Tom Murphy 207-542-4998
tom@thehia.org

As Momentum Builds for Policy Change, U.S. Market for Products Made from Industrial Hemp Continues to Thrive

2012 Annual Retail Sales for Hemp Products Hit \$500 Million

A \$38 Billion Global Industry



Science Update blog

Home | About this blog | The bloggers | High-Impact Science | Terms & Conditions

Cannabis, cannabinoids and cancer – the evidence so far

Posted on [July 25, 2012](#) by [Kat Arney](#)

Few topics spark as much debate on this blog and on our [Facebook page](#) than cannabis.

So we thought we'd take a look at the common questions raised about the evidence and research into cannabis, cannabinoids (the active chemicals found in the plant and elsewhere) and cancer, and address some of the wider issues that crop up in this debate.

We've broken it down under a number of headings:

- [What are cannabinoids and how do they work?](#)
- [Can cannabinoids treat cancer?](#) (including lab research, clinical research and unanswered questions)



Cannabis has long been used for



Topics Network About ASME Shop ASME

Hemp Carbon Makes Supercapacitors Superfast

July 2013

by Mark Crawford, ASME.org

Topics Energy



Most people don't understand the truly diverse value of hemp (*Cannabis sativa*). Cultures have depended on this hardy plant for centuries for clothing, fabric, and paper. Today, it is also used for food, fuel, medicine, building materials, and plastics. Now the energy storage industry is starting to take notice, thanks to new Canadian research that shows supercapacitors with electrodes made from hemp-based carbon nanosheets outperform standard supercapacitors by nearly 200%.