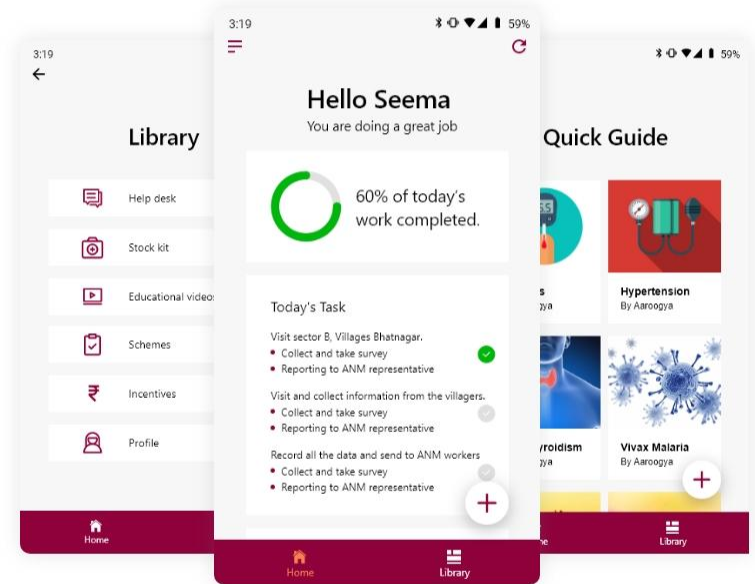


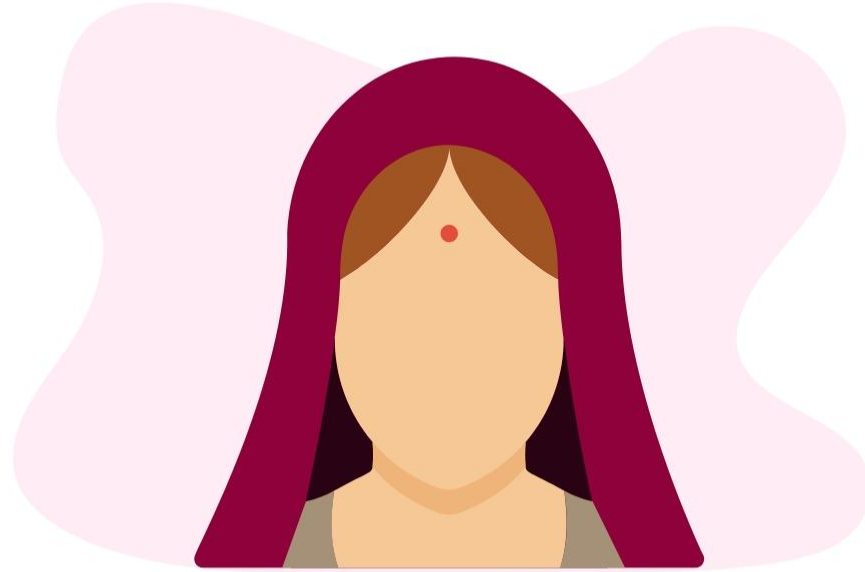


Aaroogya Foundation

Early detection of cancer in women



Nearly 600 Women die everyday in India due to cancer



**We mourn the loss of our friend Laxmi.
Don't let other Laxmi die**

Mission

"Two Doctors giving over
50 million Laxmis' around the world,
access to early Cancer Detection services to
save their lives"



Dr. Dhruv Kacker

Dr. Priyanjali Datta

Cancer: THE SILENT KILLER



**Over 130 million Indian women may be
stalked by this silent killer
by 2030**

<https://www.thehindu.com/sci-tech/health/one-in-10-indians-will-develop-cancer-during-their-lifetime-who-report/article30734480.ece>

More than 3 times the population of California

Women: At risk for 3 types of cancers



We provide early cancer detection and diagnosis for
Breast, Cervical and Oral Cancers



2000

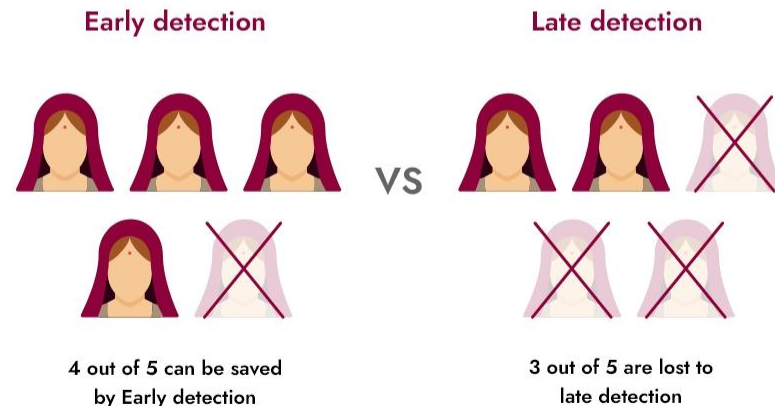
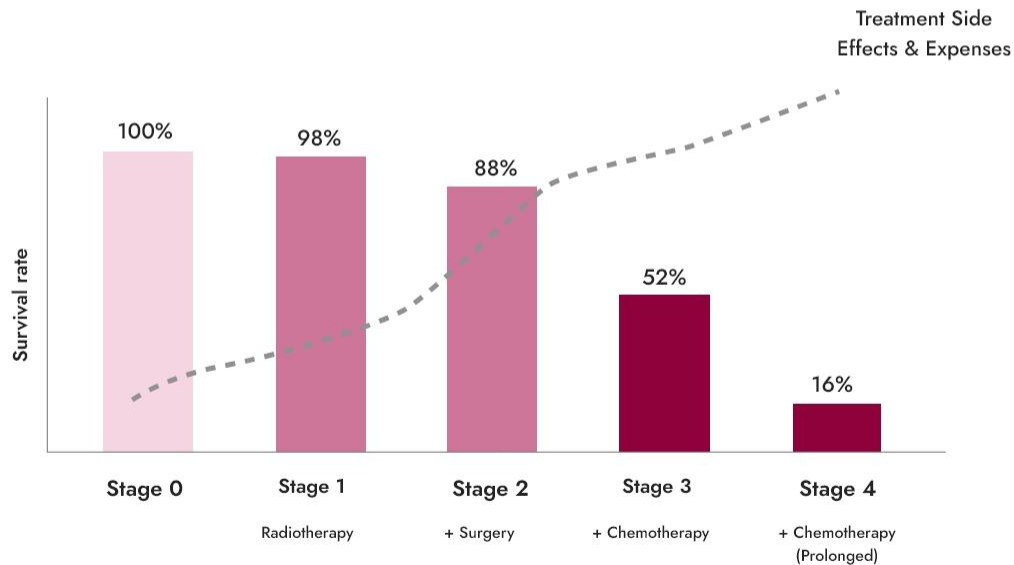
women are diagnosed with cancer everyday

Source: <http://cancerindia.org.in/cancer-statistics/>



Limited access to medical services is the biggest threat to early detection

7 out of 10 Are detected in Later Stages



The situation gets more desperate because:



Inaccessibility to health care infrastructure



Expensive treatment in late stages leads to poverty trap



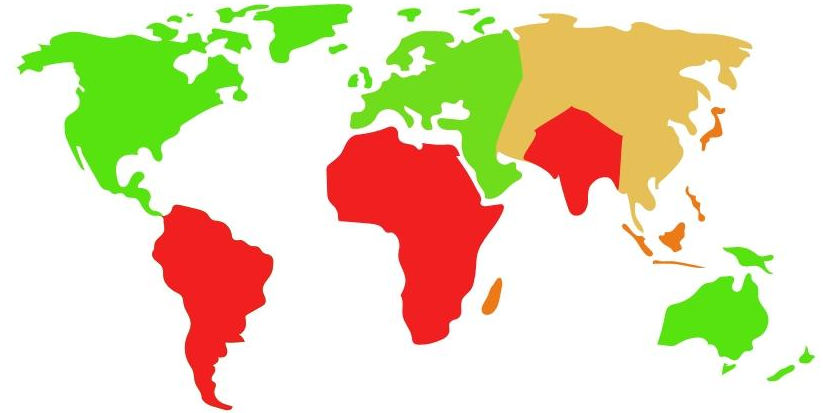
We are standing at a critical point

We face a loss of 2% of GDP due to untimely detection of chronic disease

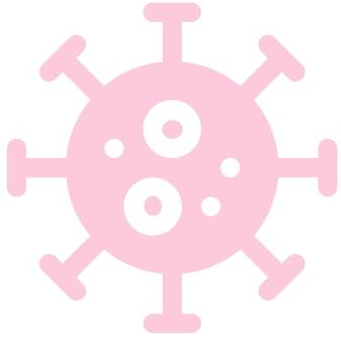


This is not exclusive to India....

This is happening across the world. There are a lot of countries in Asia, Africa, and South America which face similar or worse problems. It is increasing day by day.



Covid is aggravating the problem!



**Mistrust between healthcare workers
and the patient due to the risk of
infection**



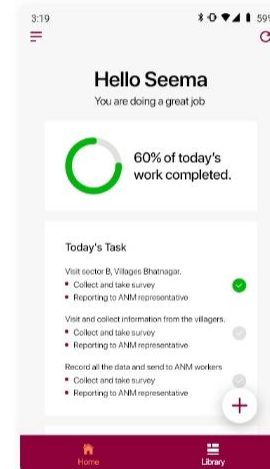
No Safety Gear



**No treatment for other
diseases**

Decentralizing Healthcare

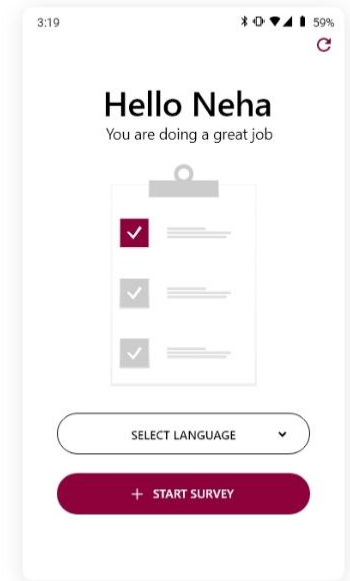
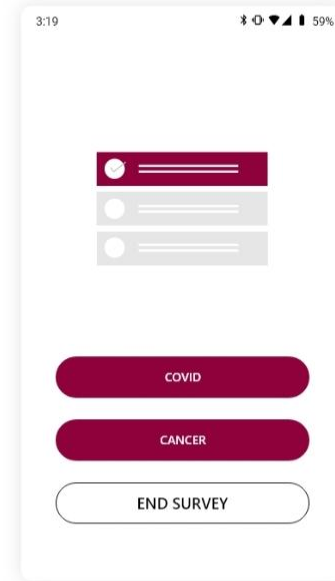
Aarogya is an International not for profit social enterprise creating globally scalable products and models to enable community level early detection of cancer screening in women and mobilize them for timely action



My Healthline Suite of Products

Highly robust, scalable, secure, and 360° data protected solution with open MRS

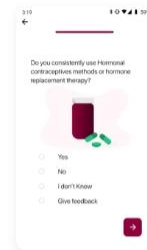
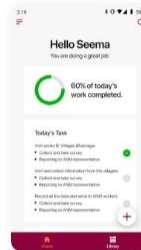
By combining AI-assisted tech intervention and on the ground support by our medical teams, we empower frontline health care worker like Asha/ANM in India and mid-level healthcare workers in Africa to screen women for cancer.



Solution : 3 'T's for Early Cancer Diagnosis



Artificial Intelligence
assisted Technology



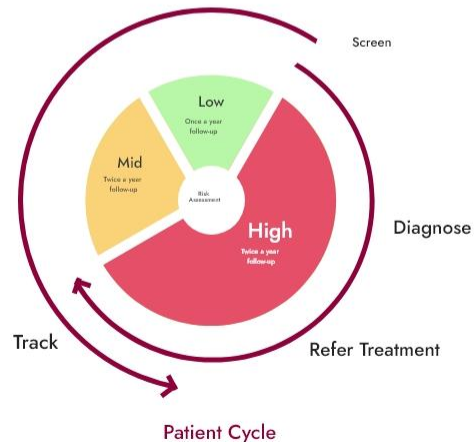
Training and onground support of
local healthcare workers



Tracking

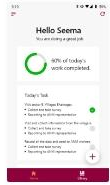


Data security with
360 protection
and local servers



3T approach : Technology, Training and Tracking

My Healthline suite of products



Mobile application



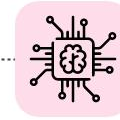
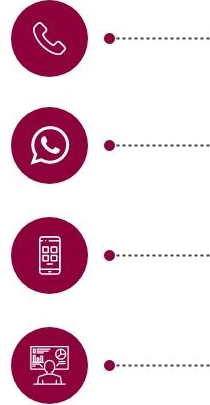
Web portals



Dashboard



Helpline



Multi-channel approach



Artificial intelligence assisted tech intervention for cancer screening backed by doctors



Secure cloud portals



Evidence based methods



Aarogya fellows identifies local authorities and local partner



Aarogya fellows train local health workers



Frontline healthcare worker screening local women on my healthline app



My healthline analyses and creates a triaging report



High Risk



Referred to local hospital



Low Risk



Annual follow ups and prescriptive prevention method given with a helpline number for further information on cancer prevention and care

Skilled Frontline Health worker

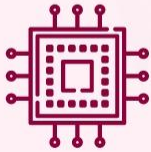
Efficiency of Frontline health workers increases

Early detection of cancer

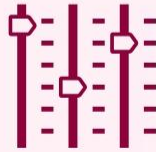
Government map population for disease burden

Predictive analysis

Features of My Health-Line suite of products



Low Bandwidth
Technology



Customizable
platform



Artificial intelligence based
symptom assessment



Open MRS for 360* data
protection



Partnership with
grassroots organization



Provided in the
local language



Leveraging the
existing health systems



Delivered by local health
workers



Local servers

Our approach is very scalable

The problem is exponentially increasing and we intend to empower local authorities, private and social companies and civil society organizations with **My Healthline suite of solutions**

Full stack
Product

Limited
stack
Product

APIs Application
Programming
Interface

Software
development
kits

Sustainable development goals





**Unique Cancer ID and Risk profile
for each one and everyone**

Aarogya Ecosystem



Team Aarogya Foundation



Local Administration (Access to the community)



Community partners (local NGOs to scale)



Frontline Healthcare workers

Progress so Far

Cancer Screening

51,000+
Women Screened
for cancer

2,900
Of them got
detected
with cancer early

2000+
Frontline Healthcare
workers trained

**Launch in
Africa**

COVID'19 Response

Leading a consortium of 23
Social and technology
organization "COVID 19
pandemic wellbeing task
force"

2,00,000+
People reached

27,000+
site visitors

25,000+
patients assessed

50+cities
and towns in India

1000+
doctors, policy makers,
entrepreneurs,
scientists and civil society
orgs reached

FOUNDING TEAM



Dr. Priyanjali Datta
CEO/ Cofounder

BDS ESIC college and hospitals
Top 50 Global Healthcare Leaders
India | UAE | USA
Outlook National Achievers Awardee
Rex Karamveer Chakra



Dr. Dhruv Kacker
COO/ Cofounder

BDS (Manipal) MDS and incoming MBA
at Carey's business school John's
Hopkins University
Ex faculty at ESIC college and hospital
National research paper awardee



Er. Vikas Garg
Product Development Head

B. Tech from IIT Delhi
2 yrs of experience in product
management and 3 years in data
analytics and consulting



YOUNG LEADERS



Dr Ankit Kumar Shahi



Puja Das



Shyanjali Datta



Chaitanya Thanekar

WITH GENEROUS SUPPORT FROM



Media Coverage



ELLE



The Economic Times



What makes me relate to a fellow social entrepreneur?



Creating an ecosystem of social entrepreneur

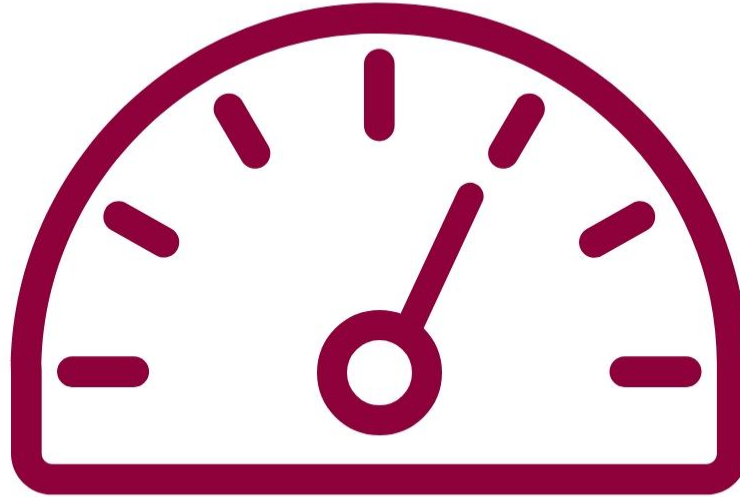
- 5 Creating Real value and understanding the depth and width of the problem
- 4 Hate A strong word, but, literally hate the magnitude of the problem
- 3 Shouts about the existence of the idea and her/ his ability to execute to the world and no hush hush!
- 2 Paranoid: Starts talking unstoppably about various dynamics of the problem and the Barriers and weaknesses to solve it
- 1 Cares equally about impact, sustainability and human capital

What is luxury to you?



THE WALL STREET JOURNAL.

Earn your social capital



Join us now to move the needle together



We aim to reach 50 MM women by 2030



<https://www.aarogyia.org/>



+91 11-40847651



info@aarogyia.org.in



<https://www.linkedin.com/in/ngo-aarogyia-4b63a3160>

